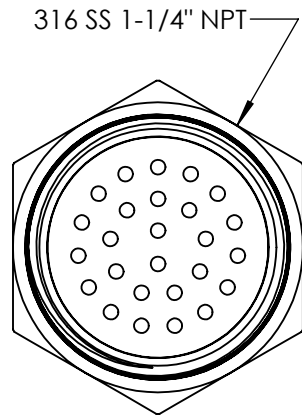
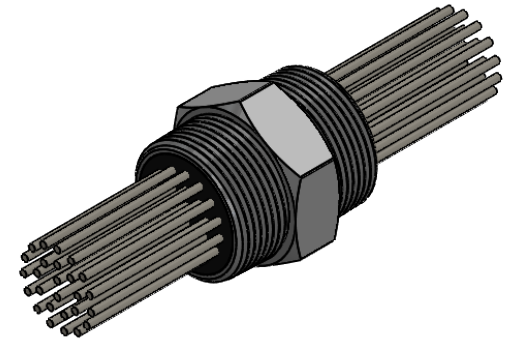


2

1

PLEASE SIGN TO APPROVE

X _____ / _____



26 X 14 AWG
PTFE INSULATED
WIRE

ATMOSPHERE

2.1

VACUUM/PRESSURE

84 INCHES
MINIMUM

84 INCHES
MINIMUM

NOTES:

1. -30C TO 55 C OPERATING TEMPERATURE OF FEEDTHROUGH SEAL
2. LEAK TEST: 90PSI, NO AIR BUBBLES 3 MINUTES
3. 0.1"(+0.1/-0) INDIVIDUAL JACKET STRIP
4. ALL TESTS PERFORMED AT ROOM TEMP
5. HI-POT 630VDC, 500MOHM 1 SEC

The information given herein is based on data believed to be accurate, but BCE makes no expressed or implied warranties as to its accuracy and assumes no liability arising out of its use by others. This information does not constitute a license to use or infringe on any patents

PROPRIETARY AND CONFIDENTIAL

THE INFORMATION CONTAINED IN THIS DRAWING IS THE SOLE PROPERTY OF BELLOVE CO. ENGINEERS. ANY REPRODUCTION IN PART OR AS A WHOLE WITHOUT THE WRITTEN PERMISSION OF BELLOVE CO. ENGINEERS IS PROHIBITED.

UNLESS OTHERWISE SPECIFIED:
DIMENSIONS ARE IN INCHES
TOLERANCES:
FRACTIONAL ±
ANGULAR: MACH ± BEND ±
TWO PLACE DECIMAL ± .050
THREE PLACE DECIMAL ± .009

INTERPRET GEOMETRIC TOLERANCING PER:
MATERIAL SEE DWG
FINISH N/A

DO NOT SCALE DRAWING

PART. NO.



TITLE:

**26X 14 AWG
FEEDTHROUGH**

SIZE	DWG. NO.	REV
A	BCE11108	-

SCALE: NTS WEIGHT: N/A SHEET 1 OF 1

2

1

B

B

A

A