

2

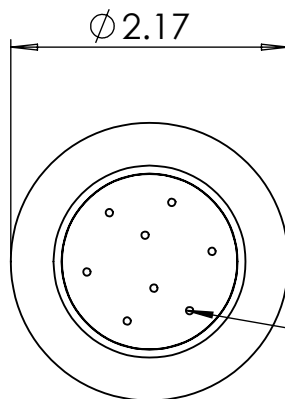
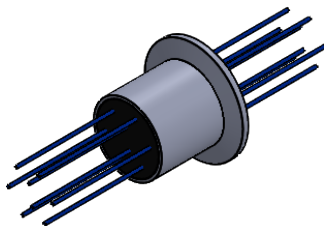
1

PLEASE SIGN TO APPROVE

X _____ / _____

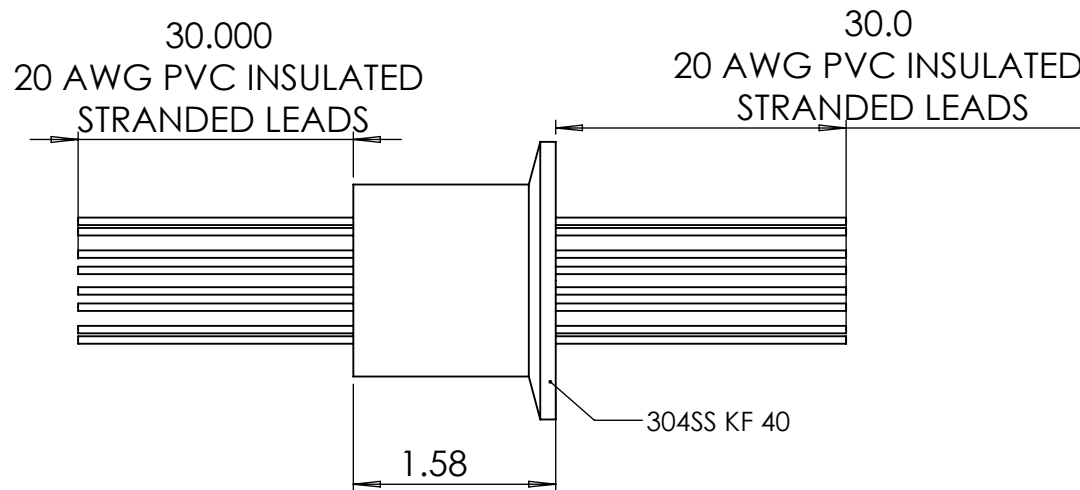
REVISIONS

ZONE	REV.	DESCRIPTION	DATE	APPROVED
	1	QTY OF LEADS INCREASED FROM 8 TO 18	9/20/2021	A.M

18 LEADS
"NOT SHOWN"

NOTES:

- 10C TO 70 C OPERATING TEMPERATURE
- CONTINUOUS TEMPERATURE RANGE 0C TO 60C
- PART MUST BE RAMPED UP AND DOWN SLOWLY TO AVOID THERMAL SHOCK
- 10^{-7} ATM-CC/Sec



The information given herein is based on data believed to be accurate, but BCE makes no expressed or implied warranties as to its accuracy and assumes no liability arising out of its use by others. This information does not constitute a license to use or infringe on any patents

PROPRIETARY AND CONFIDENTIAL

THE INFORMATION CONTAINED IN THIS DRAWING IS THE SOLE PROPERTY OF BELLOVE CO. ENGINEERS. ANY REPRODUCTION IN PART OR AS A WHOLE WITHOUT THE WRITTEN PERMISSION OF BELLOVE CO. ENGINEERS IS PROHIBITED.

UNLESS OTHERWISE SPECIFIED:

DIMENSIONS ARE IN INCHES
TOLERANCES:
FRACTIONAL ±
ANGULAR: MACH ± BEND ±
TWO PLACE DECIMAL ± .050
THREE PLACE DECIMAL ± .009

INTERPRET GEOMETRIC
TOLERANCING PER:MATERIAL
SEE DWGFINISH
N/A

DO NOT SCALE DRAWING

PART. NO.

BCE

TITLE:

18X 20AWG
FEEDTHROUGH

SIZE

A

DWG. NO.

BCE11046

REV

1

SCALE: NTS

WEIGHT: N/A

SHEET 1 OF 1

2

1

B

B

A

A