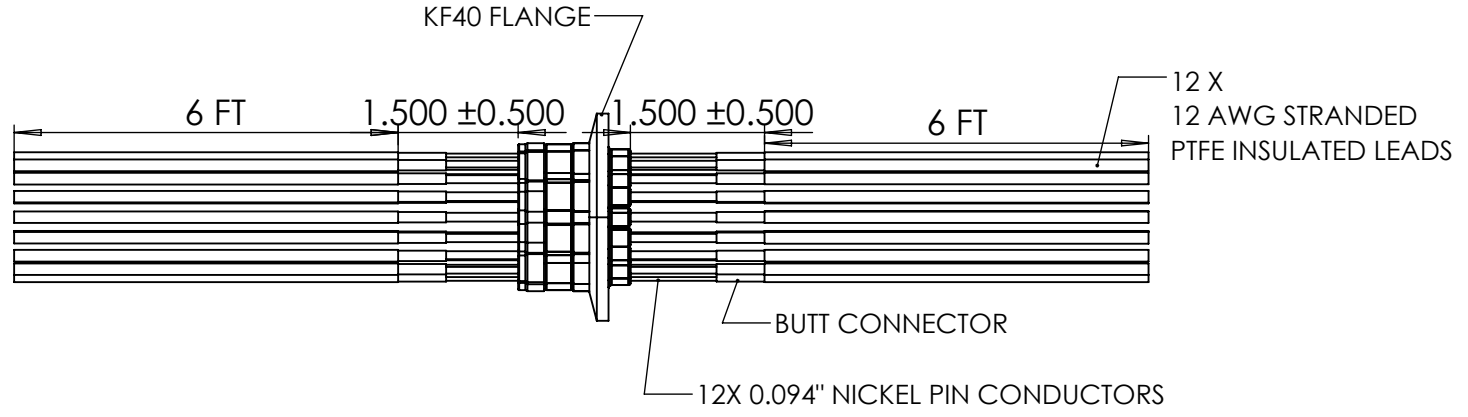
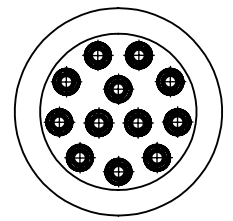
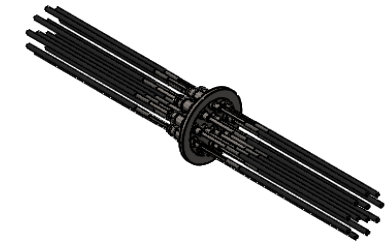


2

1

B

B



A

A

NOTES:

- 1. OPERATING TEMPERATURE: -60C TO 40C
- 2. Vacuum Leak Rating: 10^{-9} ATM-CC/Sec

The information given herein is based on data believed to be accurate, but BCE makes no expressed or implied warranties as to its accuracy and assumes no liability arising out of its use by others. This information does not constitute a license to use or infringe on any patents

UNLESS OTHERWISE SPECIFIED:
 DIMENSIONS ARE IN INCHES
 TOLERANCES:
 FRACTIONAL ±
 ANGULAR: MACH ± BEND ±
 TWO PLACE DECIMAL ± .020
 THREE PLACE DECIMAL ± .008

PART. NO.
BCE

TITLE:
**12 CONDUCTOR
 KF40 FEEDTHROUGH**

PROPRIETARY AND CONFIDENTIAL
 THE INFORMATION CONTAINED IN THIS DRAWING IS THE SOLE PROPERTY OF BELLOVE CO. ENGINEERS. ANY REPRODUCTION IN PART OR AS A WHOLE WITHOUT THE WRITTEN PERMISSION OF BELLOVE CO. ENGINEERS IS PROHIBITED.

INTERPRET GEOMETRIC TOLERANCING PER:
 MATERIAL SEE DWG
 FINISH N/A

SIZE	DWG. NO.	REV
A	BCE10935	0

DO NOT SCALE DRAWING

SCALE: NTS	WEIGHT: N/A	SHEET 1 OF 1
------------	-------------	--------------

2

1