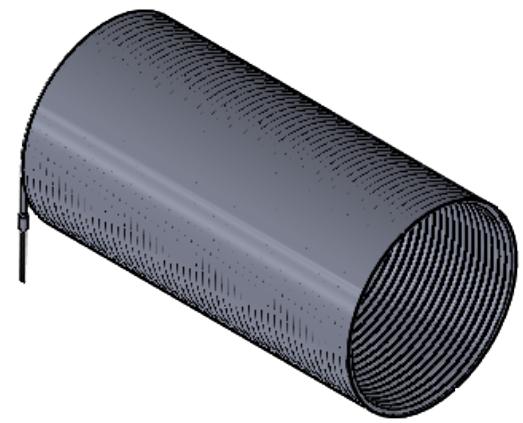


4

3

2

1



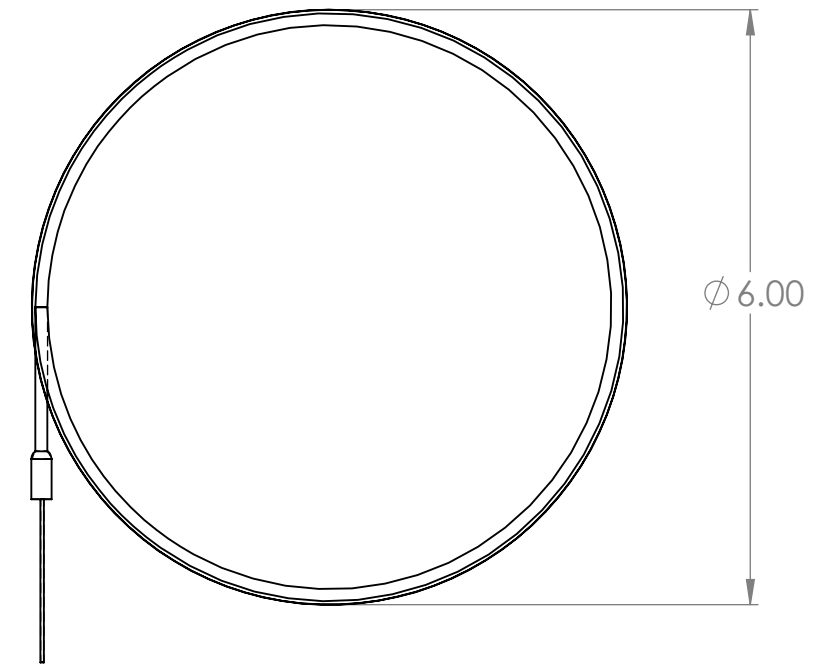
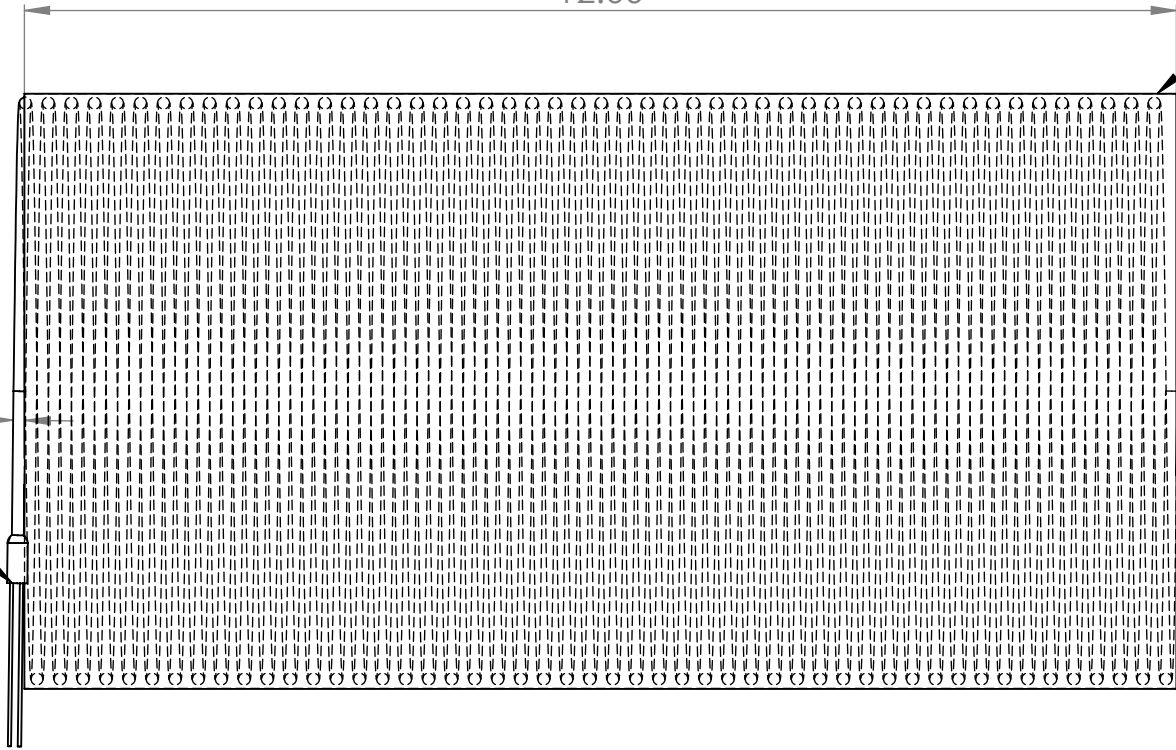
HEATER TO BE STAR WOUND IN THE ID OF THE RING

12.00

0.02" THICK 300 SERIES SS

Ø0.125 CABLE HEATER

2X TEFLON INSULATED LEADS



Ø 6.00

A

NOTES:

- FOR REFERENCE ONLY
- HEATER SPECS: 1800 WATT, 120 VOLT

A

UNLESS OTHERWISE SPECIFIED:

DIMENSIONS ARE IN INCHES
 TOLERANCES:
 FRACTIONAL ±
 ANGULAR: MACH ± BEND ±
 TWO PLACE DECIMAL ±
 THREE PLACE DECIMAL ±



TITLE:
RING HEATER

PROPRIETARY AND CONFIDENTIAL
 THE INFORMATION CONTAINED IN THIS DRAWING IS THE SOLE PROPERTY OF <INSERT COMPANY NAME HERE>. ANY REPRODUCTION IN PART OR AS A WHOLE WITHOUT THE WRITTEN PERMISSION OF <INSERT COMPANY NAME HERE> IS PROHIBITED.

INTERPRET GEOMETRIC TOLERANCING PER:

MATERIAL SEE BOM

FINISH N/A

DO NOT SCALE DRAWING

SIZE	DWG. NO.	REV
B	BCE10510	-
SCALE: NTS		SHEET 1 OF 1

4

3

2

1