

8

7

6

5

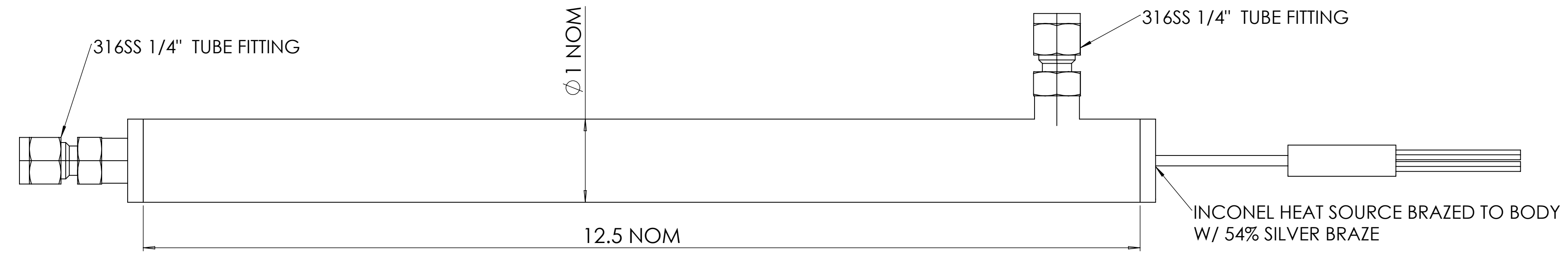
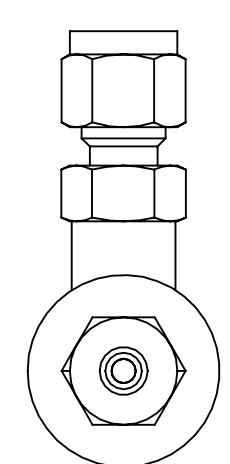
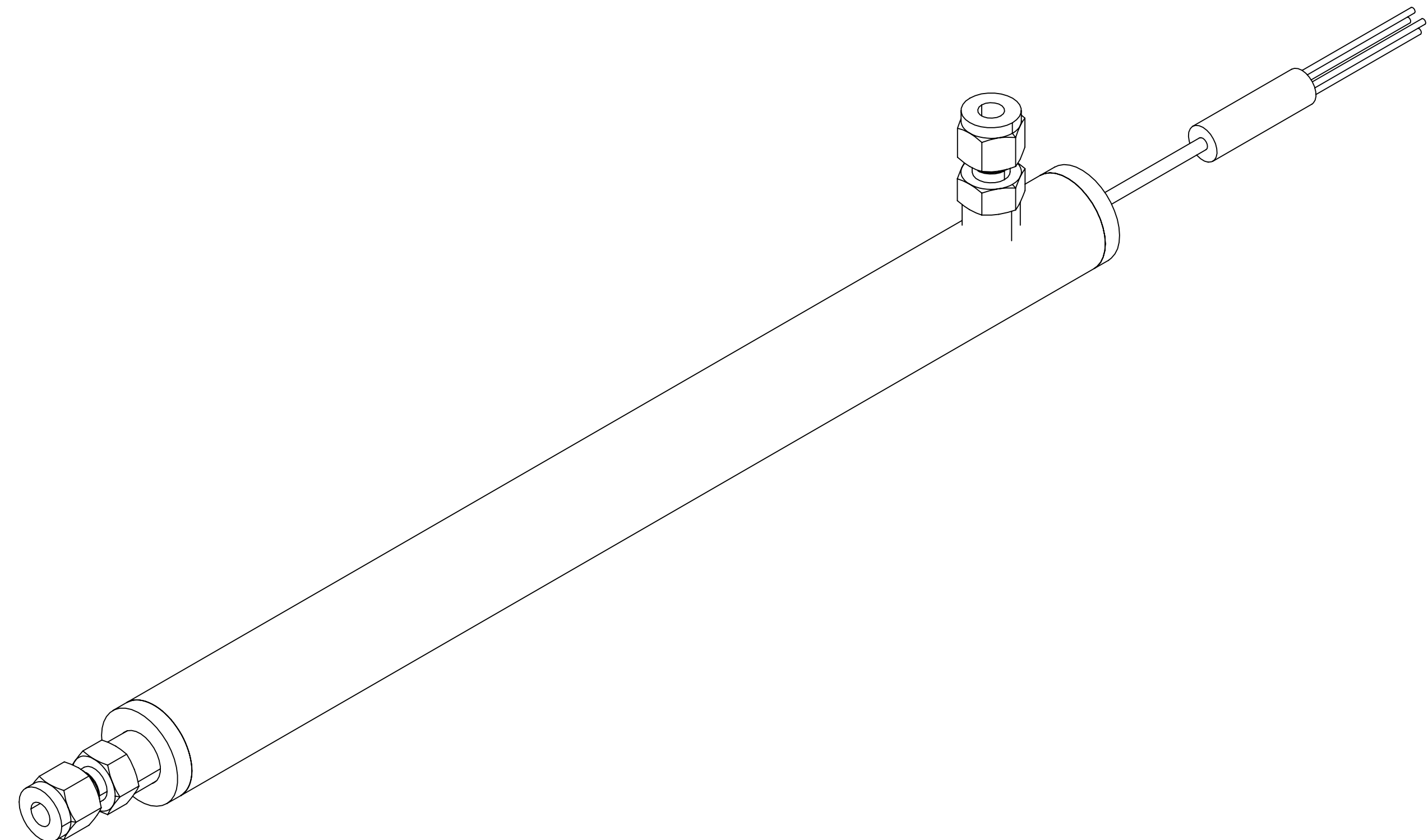
4

3

2

1

REVISIONS				
ZONE	REV.	DESCRIPTION	DATE	APPROVED



1. ELECTRICAL: 300 W(+/- 10%) 120 VOLT -36" FIBERGLASS LEADS, WITH BUILT IN "K" THERMOCOUPLE

2. 1/4" TUBE FITTINGS FOR INLET & OUTLET

3. STAINLESS STEEL 316 MAIN BODY CONSTRUCTION, NICKEL 600 ALLOY HEATER

4. **OPERATION:**

- A) HIGH POT TEST TO 700VDC @ 0.5mA FOR 5 SECONDS
- B) USER TO MAKE SURE LEADWIRE TO CASING HAS AT LEAST 1 M-OHM PRIOR TO ENERGIZING
- C) IF UNIT IS UNDER 1 M-OHM, BAKE OUT HEATER AS NECESSARY PRIOR TO OPERATING.
- D) inlet PRESSURE IS @ 800PSI

5. BCE TO CHEMICALLY CLEAN WITH IPA, BAG & TAG WITH PN.

6. ASSEMBLY TO BE POWERED UP & RAMPED IN ATMOSPHERE AT BCE PRIOR TO SHIPMENT. DISCOLORATION MAY BE PRESENT.

7. ASSEMBLY TESTED INTERNALLY TO 2000 PSI (HYDROSTATIC).

8. DO NOT ENERGIZE WITHOUT MINIMUM FLOW

PROPRIETARY AND CONFIDENTIAL
 THE INFORMATION CONTAINED IN THIS DRAWING IS THE SOLE PROPERTY OF BCE/AFG.
 ANY REPRODUCTION IN PART OR AS A WHOLE WITHOUT THE WRITTEN PERMISSION OF BCE/AFG IS PROHIBITED.

UNLESS OTHERWISE SPECIFIED:		NAME	DATE	21060 Corsair Blvd Hayward, CA 94545
DIMENSIONS ARE IN INCHES		DRAWN	AJM	
TOLERANCES:		CHECKED	D.S	TITLE:
FRACTIONAL ±		ENG APPR.	AJM	MCF HEATER-HIGH
ANGULAR: MACH ± BEND ±		MFG APPR.		PRESSURE
TWO PLACE DECIMAL ±0.015		Q.A.		SIZE DWG. NO.
THREE PLACE DECIMAL ±0.007		COMMENTS:		D BCE11480
INTERPRET GEOMETRIC TOLERANCING PER:				REV
MATERIAL				0
FINISH	SEE NOTES			SCALE: NTS WEIGHT:
APPLICATION	DO NOT SCALE DRAWING			SHEET 1 OF 1

8

7

6

5

4

3

2

1