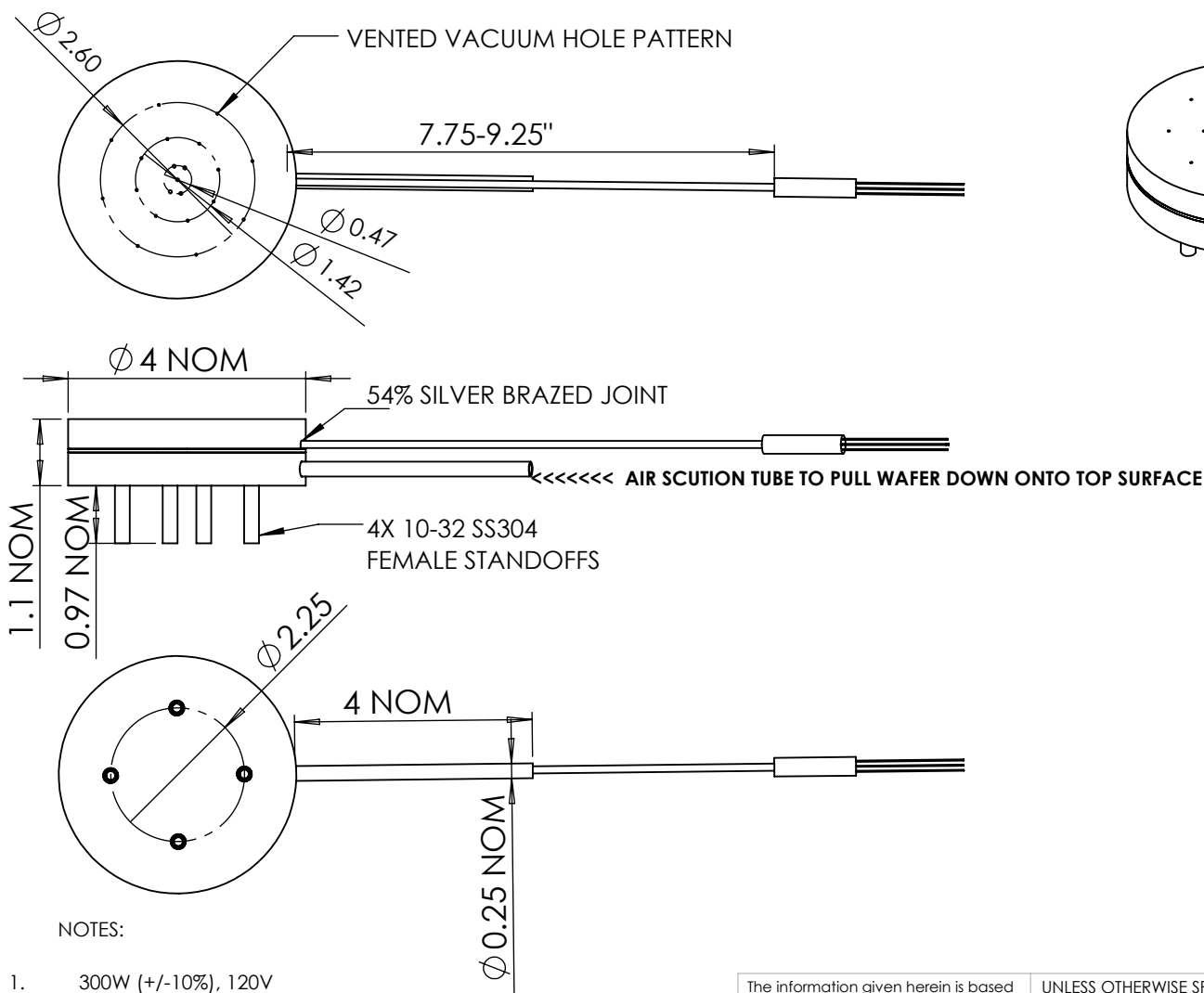


2

1

B

B



## NOTES:

1. 300W (+/-10%), 120V
2. NOT TO EXCEED 500C. WILL BE TESTED AT BCE (DISCOLORATION WILL OCCUR AT THESE TEMPERATURES)
3. 12" KAPTON LEADS W/BUILT-IN TYPE K GROUNDED TC
4. PART WILL BE CHEMICALLY CLEANED W/ IPA & BAGGED
5. SS304 MAIN BODY CONSTRUCTION

The information given herein is based on data believed to be accurate, but BCE makes no expressed or implied warranties as to its accuracy and assumes no liability arising out of its use by others. This information does not constitute a license to use or infringe on any patents

**PROPRIETARY AND CONFIDENTIAL**

THE INFORMATION CONTAINED IN THIS DRAWING IS THE SOLE PROPERTY OF BELLOVE CO. ENGINEERS. ANY REPRODUCTION IN PART OR AS A WHOLE WITHOUT THE WRITTEN PERMISSION OF BELLOVE CO. ENGINEERS IS PROHIBITED.

UNLESS OTHERWISE SPECIFIED:

DIMENSIONS ARE IN INCHES  
TOLERANCES:  
FRACTIONAL  $\pm$   
ANGULAR: MACH  $\pm$  BEND  $\pm$   
TWO PLACE DECIMAL  $\pm .050$   
THREE PLACE DECIMAL  $\pm .009$

INTERPRET GEOMETRIC TOLERANCING PER:

MATERIAL

304 SS

FINISH

N/A

DO NOT SCALE DRAWING

PART. NO.

**BCE**

TITLE:

VENTED HOLE HEATER CHUCK

SIZE

**A**

DWG. NO.

BCE11397

REV

-

SCALE: NTS

WEIGHT: N/A

SHEET 1 OF 1

2

1

A

A