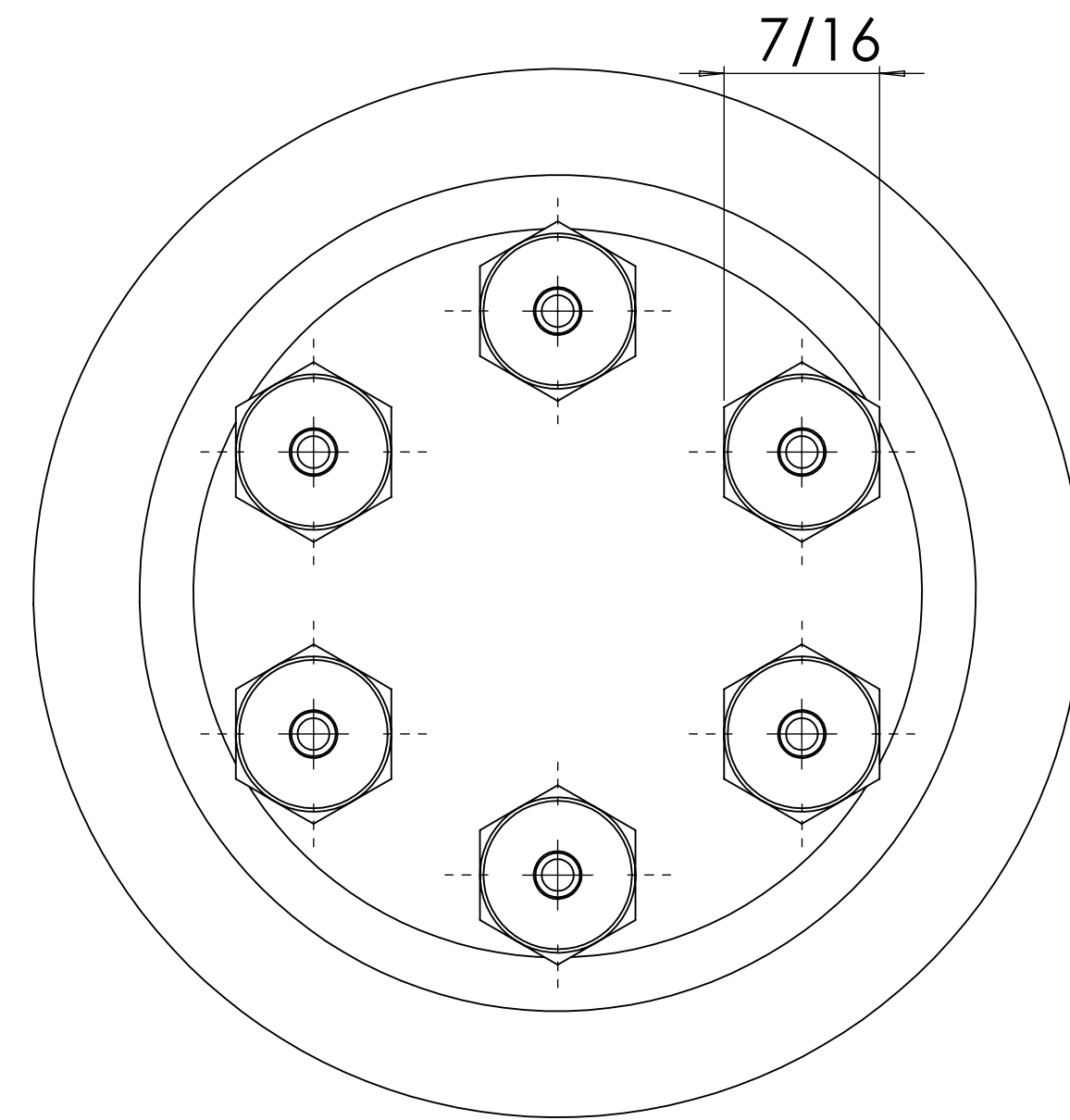
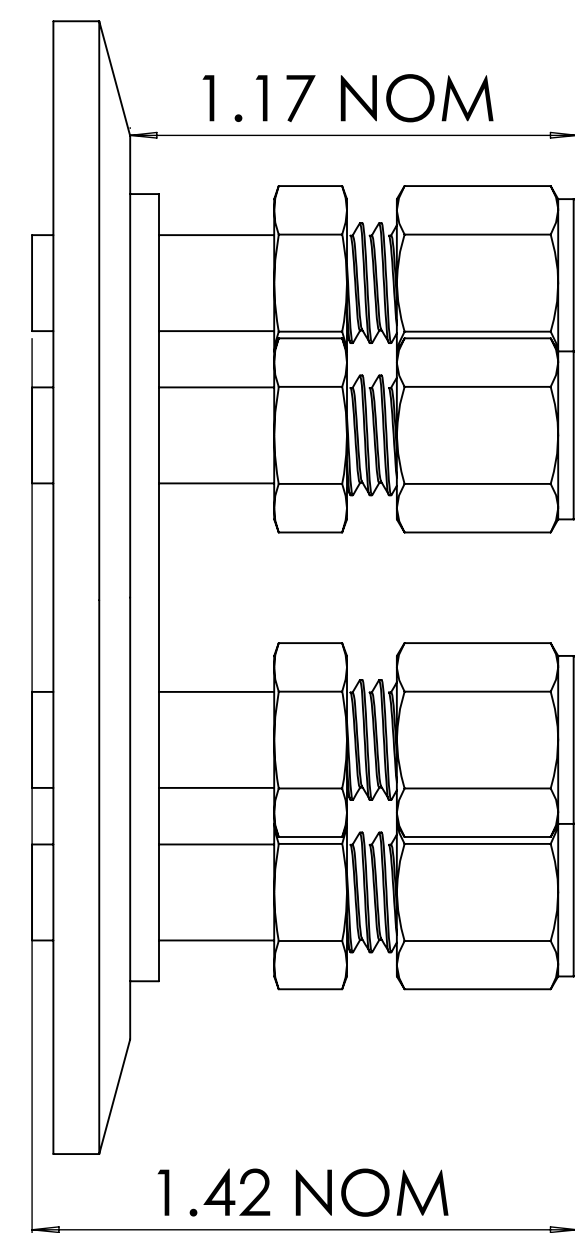
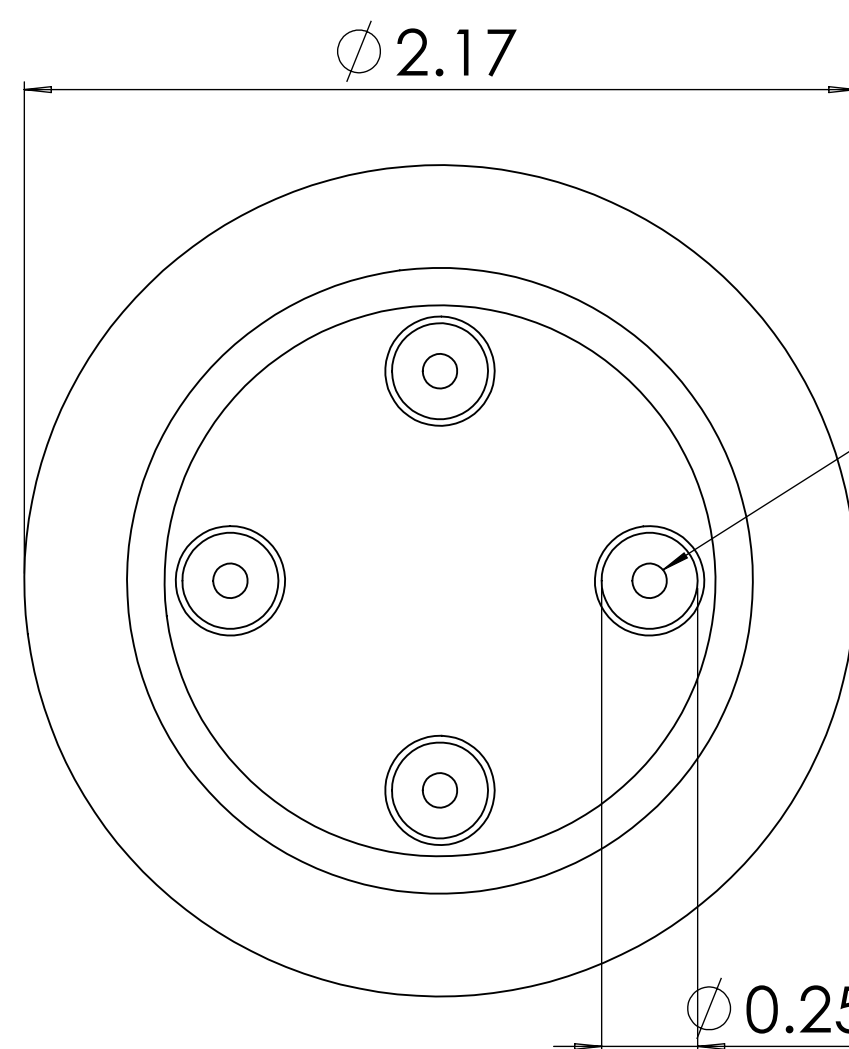
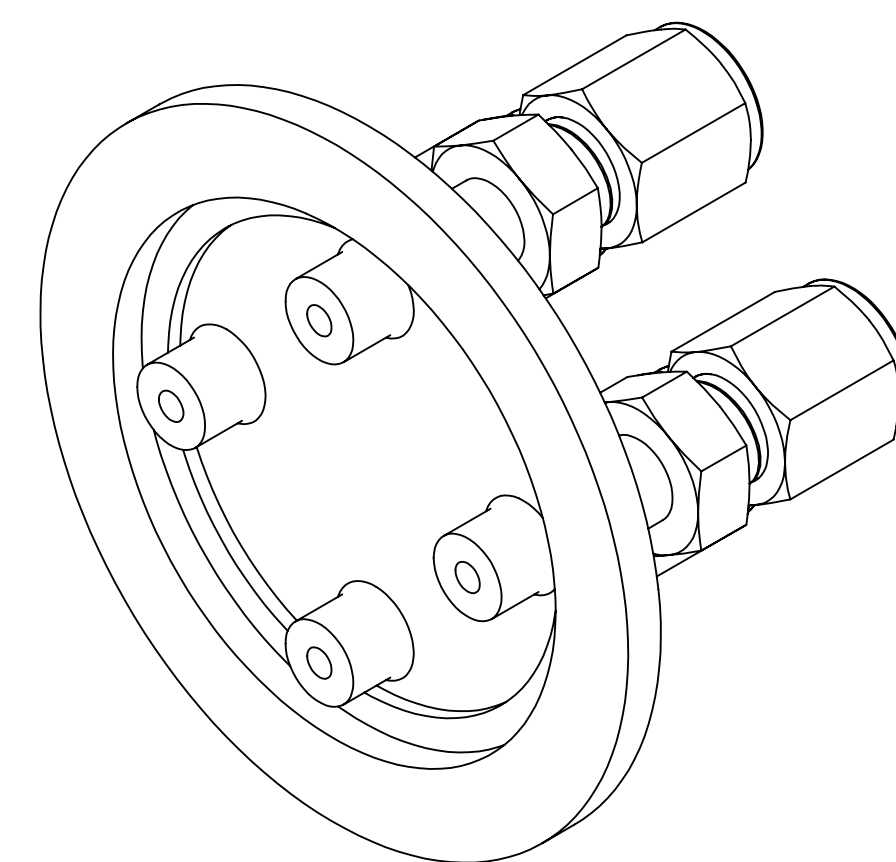
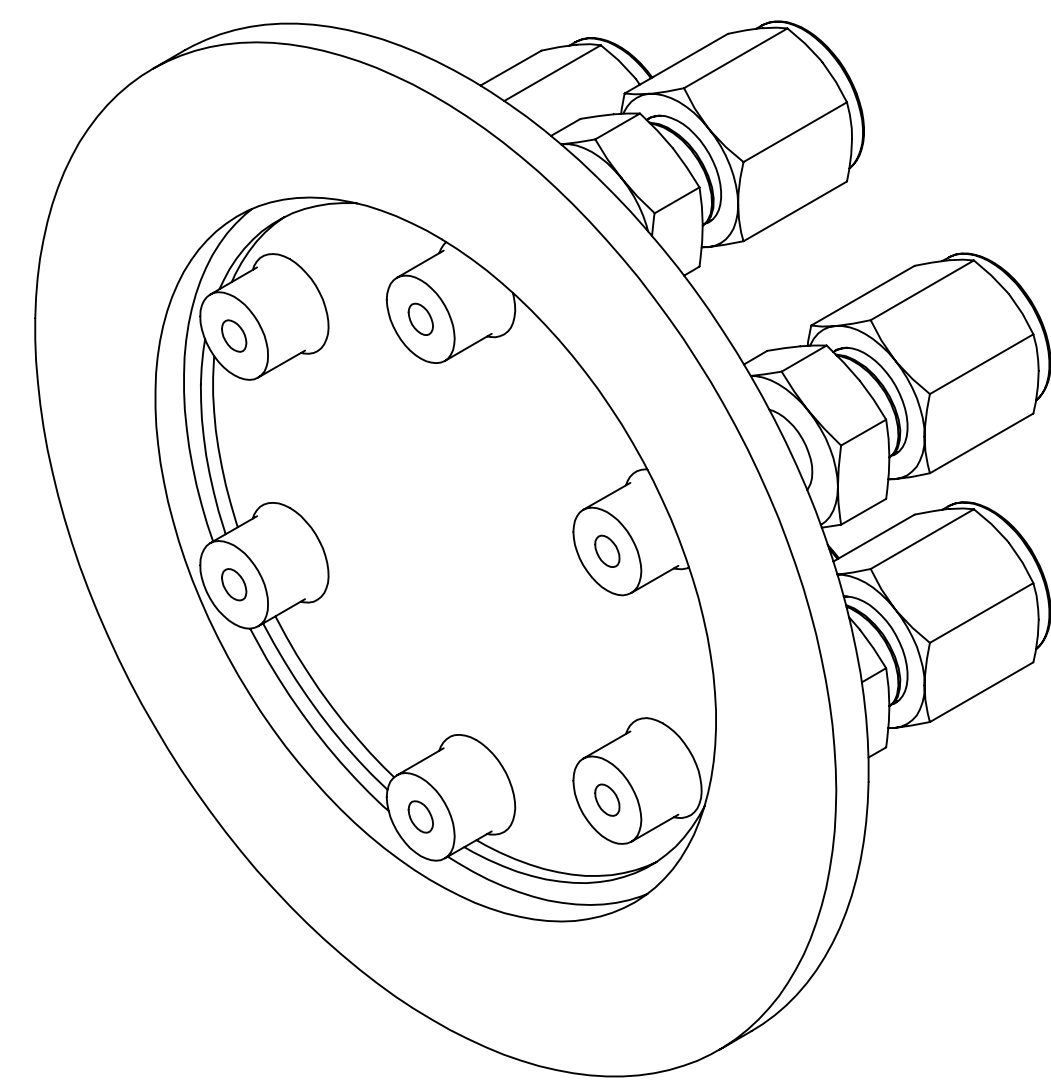


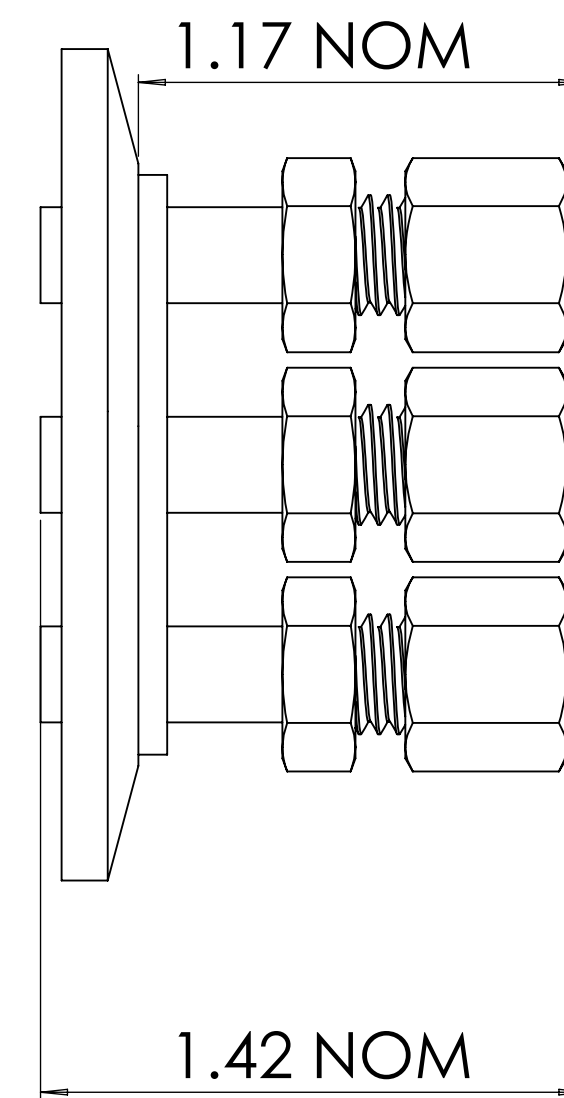
ACCOMODATES 1/8" TUBING/SENSORS



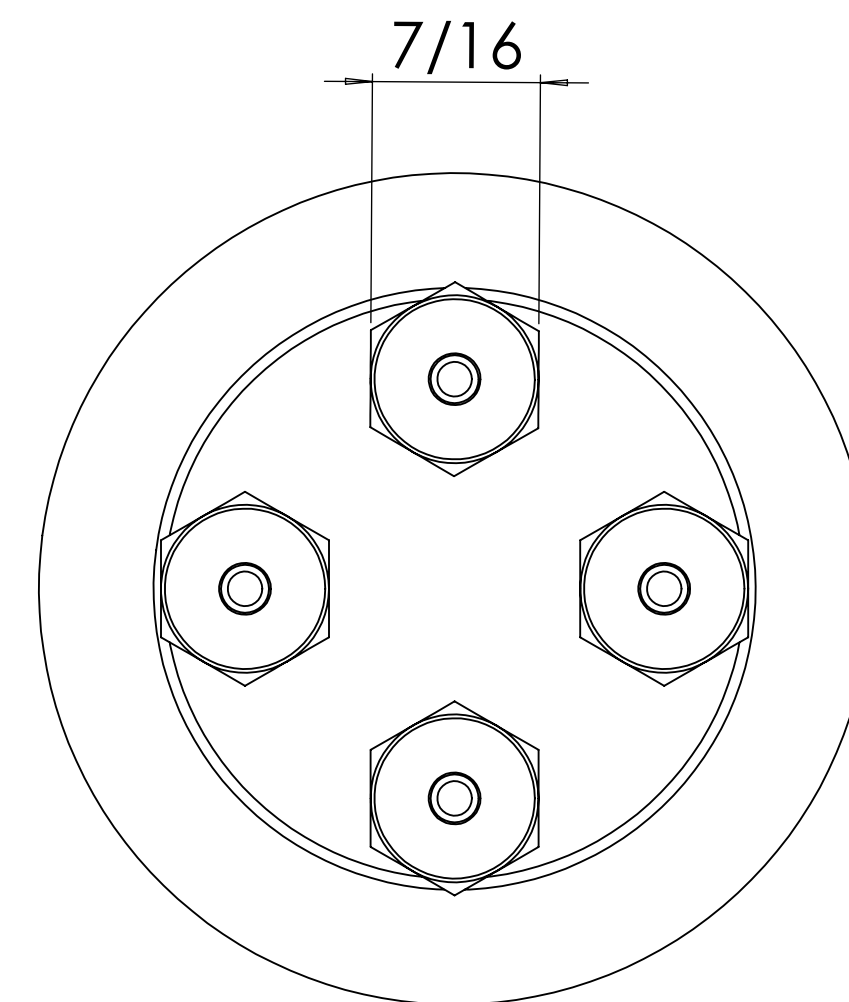
KF(QF) 50 VARIANT



ACCOMODATES 1/8" TUBING/SENSORS



KF(QF) 40 VARIANT



NOTES:

1. STAINLESS STEEL 304 MAIN BODY CONSTRUCTION.
2. ASSEMBLY HE LEAK TESTED TO 10^{-8} ATM.CC/SEC
3. LEAK RATE ACHIEVED IS DEPENDENT ON MATERIAL THICKNESS AND LEVEL OF COMPRESSION
4. BCE TO CHEMICALLY CLEAN WITH IPA, BAG & TAG WITH PN.
5. TEMPERATURE RATING : 0-180C THE APPROPRIATE O-RING MATERIAL MUST BE USED TO SUPPORT THIS TEMPERATURE RANGE.

PROPRIETARY AND CONFIDENTIAL
THE INFORMATION CONTAINED IN THIS DRAWING IS THE SOLE PROPERTY OF BCE/CFG.
ANY REPRODUCTION IN PART OR AS A WHOLE WITHOUT THE WRITTEN PERMISSION OF BCE/CFG IS PROHIBITED.

| | | | | |
|---|----------------------|----------------|------|---|
| UNLESS OTHERWISE SPECIFIED: | | NAME | DATE | 21060 Corsair Blvd Hayward, CA 94545 TITLE: COMPRESSION FITTING FEEDTHROUGHS |
| DIMENSIONS ARE IN INCHES | | DRAWN | AJM | |
| TOLERANCES: | | CHECKED | D.S | SIZE DWG. NO. D BCE11346 |
| FRACTIONAL ± | | ENG APPR. | AJM | REV - |
| ANGULAR ± MACH ± BEND ± | | MFG APPR. | | SCALE: NTS WEIGHT: SHEET 1 OF 1 |
| TWO PLACE DECIMAL ±0.015 | | | | |
| THREE PLACE DECIMAL ±0.007 | | | | |
| INTERPRET GEOMETRIC TOLERANCING PER: MATERIAL | | Q.A. COMMENTS: | | |
| FINISH | SEE NOTES | | | |
| NEXT ASSY | USED ON | | | |
| APPLICATION | DO NOT SCALE DRAWING | | | |