

4

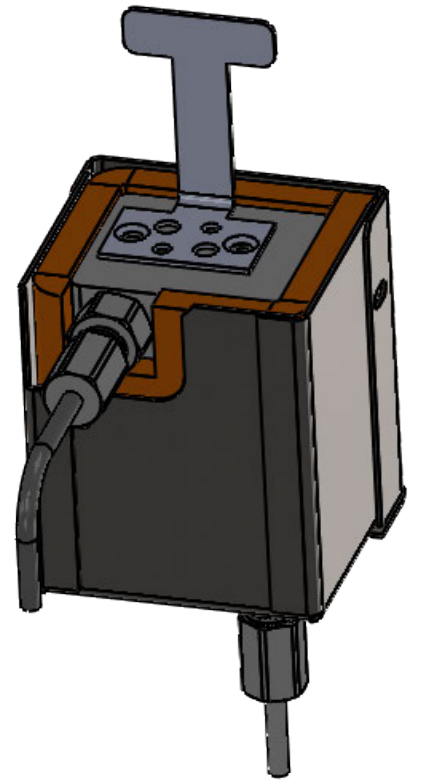
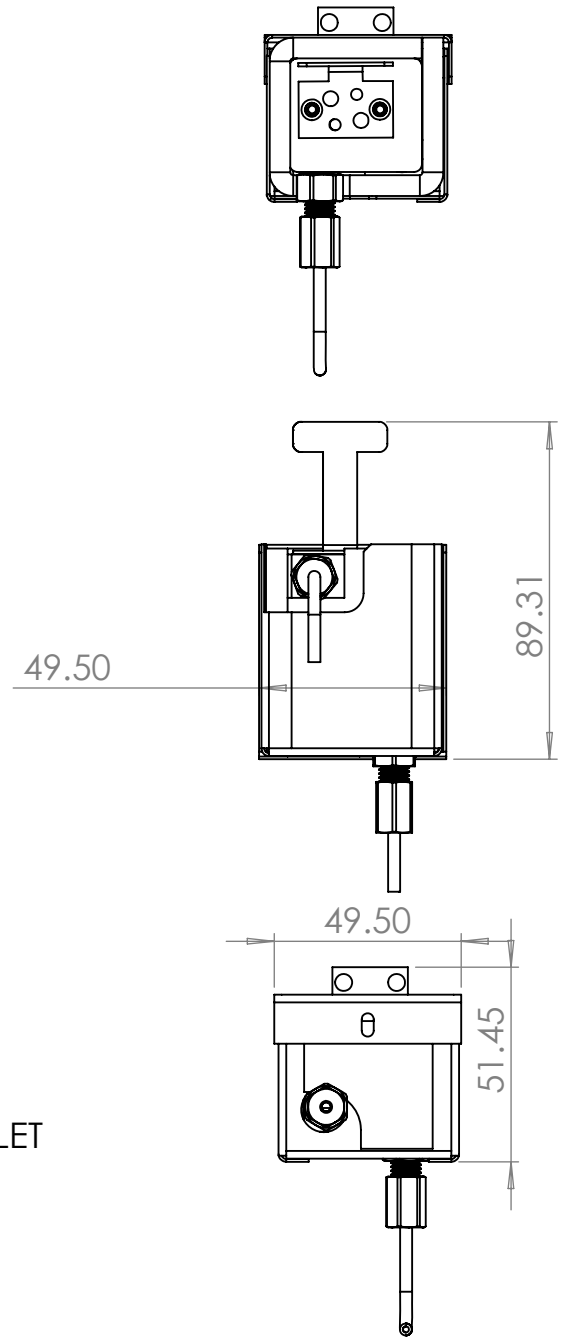
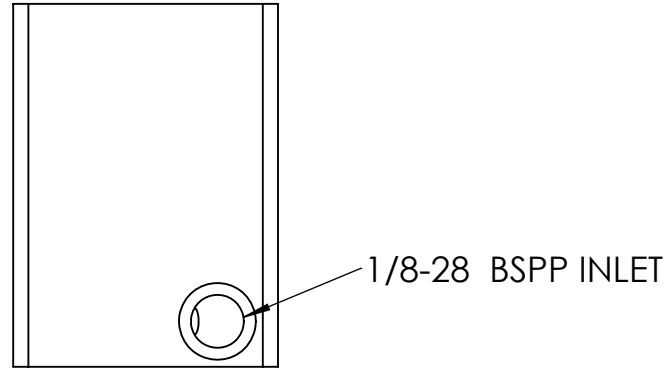
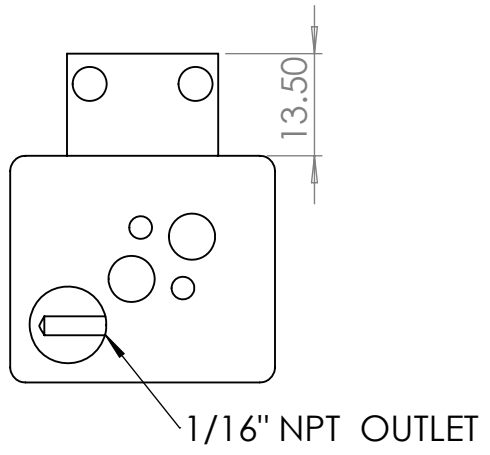
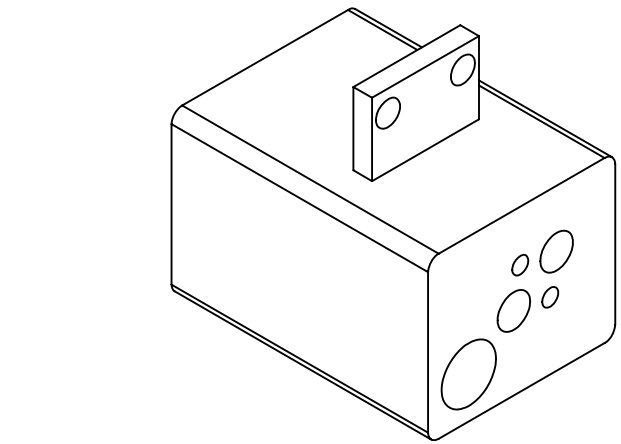
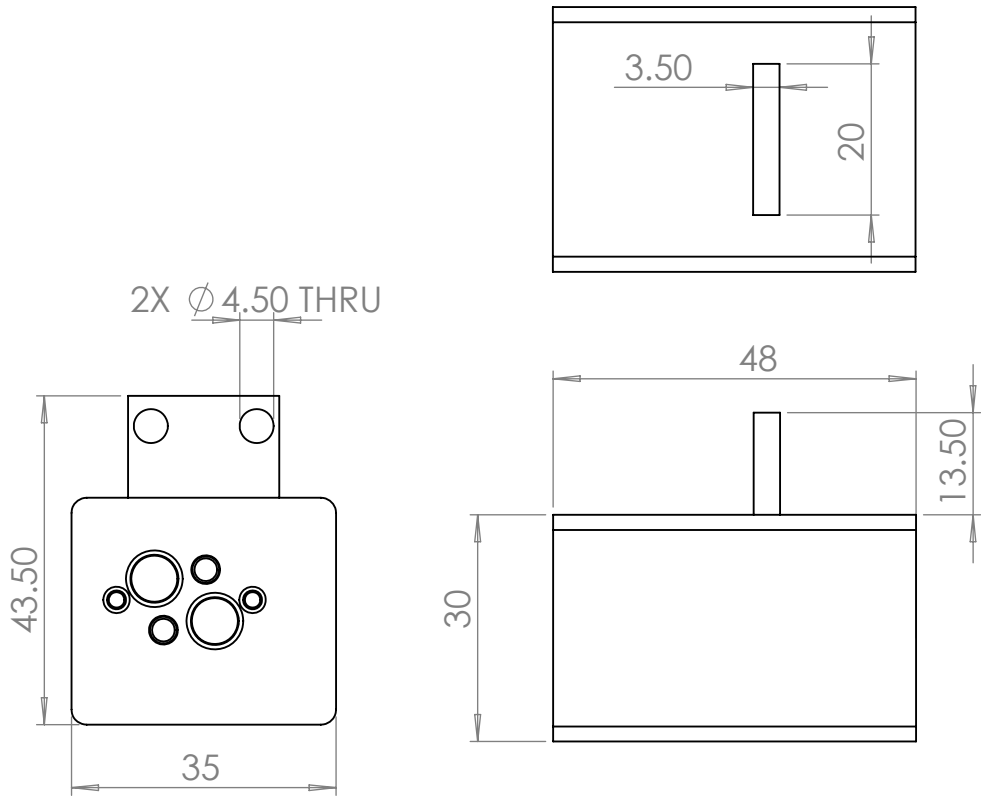
3

2

1

B

B



NOTES:

- 1. 200 WATT, 120 VOLT / 300 WATT 120 VOLT
- 2. ϕ 2.54 MM DIAMETER, 914.4 MM LONG LINEAR PATH MACHINED INTO SOLID BLOCK.
- 3. MATERIAL: STAINLESS STEEL 304
- 4. TESTED UPTO 500°C & 120 PSI
- 5. ACHIEVES ~1CFM WITH 80-100 PSI
- 6. 2 X 200 OHM PLATINUM RTD SENSORS. (1 X MONITOR & 1 X CONTROL)
- 7. PYROGEL INSULATION & SS304 SHEET METAL ENCLOSURE.

PROPRIETARY AND CONFIDENTIAL
 THE INFORMATION CONTAINED IN THIS DRAWING IS THE SOLE PROPERTY OF BELILOVE CO. ENGINEERS. ANY REPRODUCTION IN PART OR AS A WHOLE WITHOUT THE WRITTEN PERMISSION OF BELILOVE CO. ENGINEERS IS PROHIBITED.

UNLESS OTHERWISE SPECIFIED:		NAME	DATE
DIMENSIONS ARE IN MILLIMETERS		DRAWN	A.M 11/14/19
TOLERANCES:		CHECKED	
FRACTIONAL: ±		ENG APPR.	
ANGULAR: MACH ± BEND ±		MFG APPR.	
TWO PLACE DECIMAL ±		Q.A.	
THREE PLACE DECIMAL ±		COMMENTS:	
INTERPRET GEOMETRIC TOLERANCING PER:		THIS DRAWING IS FOR REFERENCE ONLY.	
MATERIAL		FINAL PRODUCT MAY DIFFER.	
FINISH			
DO NOT SCALE DRAWING			



TITLE:		
HEATED CUBE		
SIZE	DWG. NO.	REV
B	BCE10778	-
SCALE: NTS	WEIGHT: N/A	SHEET 1 OF 1

4

3

2

1

A

A